

Canadian
Home Builders'
Association



SOLARSHINGLE CANADA

PV Technical Services Inc.
Servicing Ontario Since 2009





IFT SHOP

COFFEE SHOP

ICE CREAM BAR

SHORELINE CAFE

STORE

Flexibility and adaptability to be combined with other roofing materials.



✓ Pick the right roofing from sketch,
build a sustainable life style

✓ Power the house with clean
renewable energy, increasing saving
from hydro bill every year



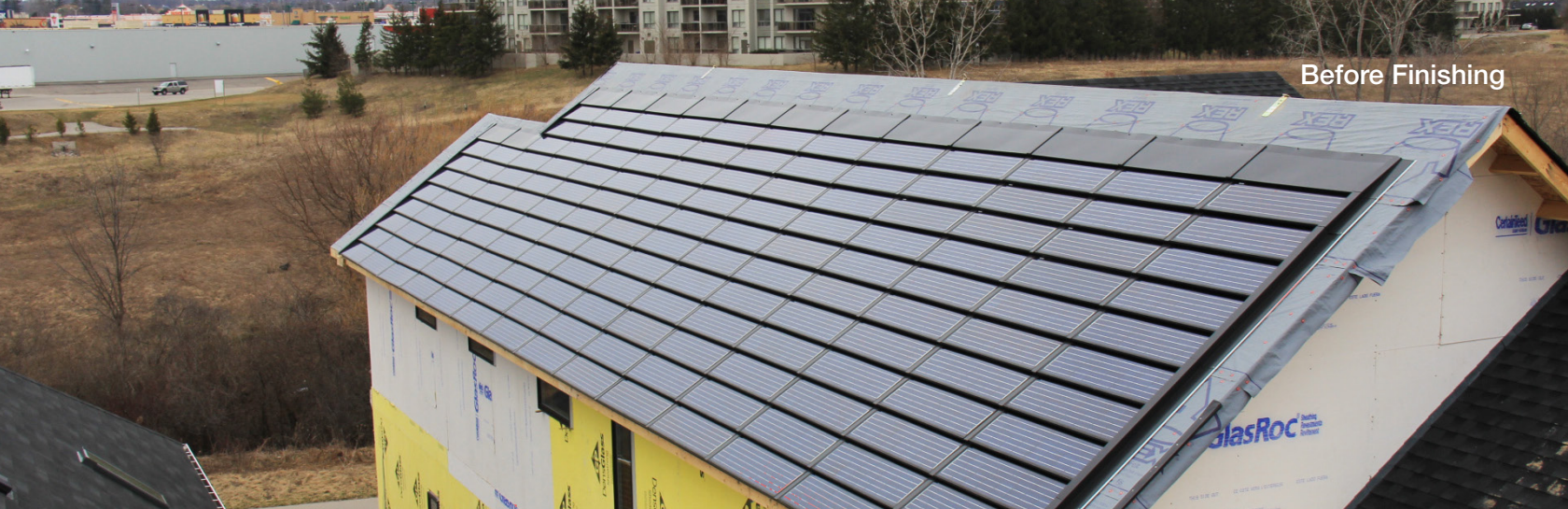
✓ No penetration, No leaking for life
time, Never reroof again

Every house deserves a long term
cost efficient environmentally
friendly roofing system.





One small step to reduce carbon footprint for over 20 years



Before Finishing



After Finishing

Unique and distinguishing looking



Innovated SS77 serial solar shingles made of black mono-crystalline solar cells, bring the whole roofing grace unique looking.







Energy independent cottage.



Solar shingle roofing works better last longer

SOLARSHINGLE CANADA

BUILDING INTEGRATED LRSS-65 SOLAR SHINGLE

WHY BIPV

Solar Shingle, designed to be perfect for sloped roofing applications, provides the house more than aesthetically appealing shelter, while powers with free clean abundant green energy. And never re-roof again.

WARRANTIES

- 10 years for product defects in materials & workmanship Linear Power Warranty
- Year 1: power output not below 97% of Nominal Output
- From year 2 up to year 25; power output yearly decrease of 0.7
- Year 25: power output not below 80.2% of Nominal Output

CERTIFICATES

- UL 1703 2002/03/15 Ed:3 Rev:2008/04/08
- UL/C-ORD-C1703-01 second edition 2001/01/01
- UL and Canadian standard for safety flat-plate
- ISO 9001:2008 Quality Management System
- CEC Listed: modules are eligible for California rebates

METAL SHINGLE QUALIFICATIONS

UL Listed Fire Test Class A (ANSI/UL 790) R25847

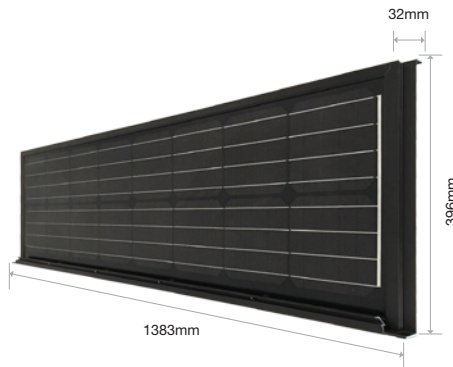
Material: 26 ga G-90 galvanization coated steel sheet

Size: L 54.37 x W 15.62 x H 2 inches

Size: L 138.61 x W 39.68 x H 5.08 cm

Weight: 7.5 Lbs / 3.4 Kg

Paint: Valspar Fluoropon SR



UL 1703 Certified (Canada/ USA Listed)
CEC Certified
UL 580 Approved

FLASHING COMPONENTS

Metal: 26ga G-90 galvanization coated steel sheet

Paint: Valspar Fluoropon SR

Flashing components are made from the same metal as the metal shingle and come with the same warranty

30

YEAR
WARRANTY
ON METAL PARTS

25

YEAR 80%
POWER
GUARANTEE

12

YEAR 90%
POWER
GUARANTEE

+5

WATTS
POSITIVE
TOLERANCES

SOLAR SHINGLES SPECIFICATIONS

ELECTRICAL CHARACTERISTICS*

| Model No.: | | LRSS-65 | LRSS-72 | LRSS-77 |
|--|-----------|---------|---------|---------|
| Max. Power rating | Pmp(watt) | 65 | 72 | 77 |
| Tolerance of P _{MP} | Watt | 0/+3 | 0/+3 | 0/+3 |
| Max. Power Volatage of P _{MP} | Vmp(V) | 7.79 | 8.06 | 8.22 |
| Max. Power Current of P _{MP} | Imp(A) | 8.37 | 8.99 | 9.45 |
| Open Circuit Voltage | Voc(V) | 9.5 | 9.83 | 10.02 |
| Short Circuit Current | Isc(A) | 8.96 | 9.62 | 10.12 |
| Max. Sys. Vol | (V) | 600 | 600 | 600 |
| Max. Series Fuse | (A) | 15 | 15 | 15 |

* STC @ 25° C 1000 W/m², AM 1.5

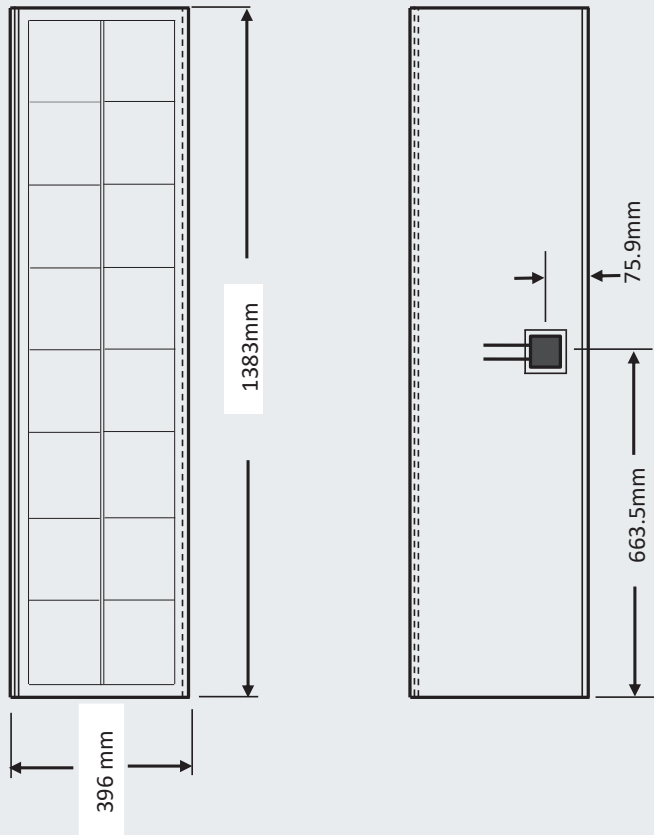
TECHNICAL FACTS

| | | | |
|------------------------|---------------|---------------|---------------|
| # of cells | 16 | 16 | 16 |
| Solar cell type | Multi | Mono | Mono |
| Cell Size (mm) | 156*156 | 156.75*156.75 | 156.75*156.76 |
| Dimension (mm) | 1386*397*51 | 1383*396*53.2 | 1383*396*53.2 |
| Weight (Kg) | 9 | 7 | 7 |
| Minimum Pitch (degree) | 15 | 15 | 15 |
| Conector | MC4 or equiv. | MC4 or equiv. | MC4 or equiv. |

THERMAL CHARACTERISTICS

| | | | |
|-------------------|----------|----------|----------|
| NOCT | +45,+ -3 | +45,+ -2 | +45,+ -2 |
| T. Coeff. Of Isc | 0.09 | 0.053 | 0.053 |
| T. Coeff. Of Voc | -0.34 | -0.31 | -0.3 |
| T. Coeff. Of Pmax | -0.37 | -0.41 | -0.39 |

* SolarShingle Canada reserves the right to make specification changes without any prior notice.





A roof provides the house more than aesthetically appealing shelter while powers.



NetZero Energy Home Live Better



SOLARSHINGLE CANADA

PV Technical Services Inc.
Servicing Ontario Since 2009